



# Central Tablelands Water

Annual Report 2007/2008



# 2007/2008 Statistics

<b>Population served (approx.):</b>	Permanent	11,500	
	Peak	12,500	
<b>No. of Properties Connected:</b>	Residential	4,078	
	Non-Residential	1,317	
<b>New Residential Connections 2007/2008:</b>		24	
<b>No. of Water Filtration Plants:</b>		3	Total Capacity: 17 ML/d
<b>No. of Service Reservoirs:</b>		45	Total Capacity: 29 ML
<b>No. of Pumping Stations:</b>		32	Total Capacity: 26 ML/d
<b>No. of Bores:</b>		5	Total Capacity: 7 ML/d
<b>No. of Dams:</b>		2	Total Capacity: 4,800 ML
<b>Length of Mains:</b>	Reticulation Mains	245	km's
	Trunk Mains	295	km's
<b>Works Depots:</b>		3	Blayney, Canowindra & Grenfell
<b>No. of Employees:</b>		19	
<b>No. of Employees receiving 2 or more training days:</b>		5	
<b>Days lost from sick &amp; accident leave:</b>		97.5	days 2.14% of available work days

WaterWise Illustrations courtesy of



## Central Tablelands County Council

30 Church Street  
Blayney 2799

**ph: 02 6368 2208**

**fax: 02 6368 2451**

**email:**

water@ctw.nsw.gov.au

**website:**

www.ctw.nsw.gov.au

# Chairman's Message



**Whilst the devastating drought of the past 5 years continued during this year in review, Central Tablelands Water (CTW) was fortunate to commence 2007/2008 with Lake Rowlands at 98% of capacity and finish the year at 67%.**

Whilst consumers in most other areas throughout the State are continuing to experience water restrictions of various degrees, CTW consumers have been fortunate not to endure any restrictions since June 2007. With the dam level rising again to 100% in early September 2008, the reliability of the Lake Rowlands catchment is once again highlighted and reinforces CTW's case to increase the volume of Lake Rowlands with the building of a new dam 2.5 kilometres downstream of the existing wall.

During 2007/2008 your water authority has carried out the following major works and initiatives:

- Replacement of AC water mains in Eugowra, Lyndhurst and Cudal – \$414,616.00

- Trunk mains replaced at Lyndhurst – \$33,528.00
- Construction of a standby bore at Quandialla – \$127,384.00
- Water Mains Extensions – \$9,763.00
- Completion of the willow removal programme at Lake Rowlands – \$93,068.00
- Commencement of the Integrated Water Cycle Management Plan

There are some challenging times ahead for CTW with the current review by the NSW State Government into the performance of non-metropolitan water utilities and the effect the global credit crisis is having on Council's investments. I am confident that CTW, as a result of the State Government review, will show up as a proven performer and will either stand alone under its current operation or operate as a fully fledged partner in any proposed alliance of water utilities within the Lachlan catchment. Whilst Council's investments have suffered a serious drop in value on paper, Council continues to receive experienced legal advice to hopefully recover the investments to full par value.

I am proud to report that your County Council continues to operate within the Best Practice Guidelines for the provision of water services, as determined by the Department of Water and Energy, and I commend and thank all my Councillors and staff for their continuing efforts to ensure that all consumers can enjoy a healthy and reliable water supply.

**Cr. J.S. Farr**  
**Chairman**

# General Manager's Report



**I am once again pleased to present a report that highlights what I consider to be another successful year for Central Tablelands Water (CTW) and a year that has continued to provide consumers with a good quality and reliable water supply.**

I am sure that consumers are grateful that, whilst the drought continues, they did not have to suffer any water restrictions during 2007/2008.

During 2007/2008, Council continued with its water mains renewal programme: completing work in Lyndhurst, continuing with the replacement of the AC water mains in Eugowra and replacement of a troublesome section of water main in Hawke Street Blayney. The benefits of this water mains renewal programme, which commenced in full swing in 2001/2002 with the replacement of 40 kilometres of reticulation mains in Grenfell, is starting to

be realised as the number of water quality complaints are now few and far between.

The willow eradication programme at Lake Rowlands was completed in 2007/2008 with the planting of some 10,000 native species of shrubs and trees. Whilst it is recognised that there will be a significant attrition rate with the re-vegetation planting, Council staff will monitor the loss and provide for suitable replacements.

Security of the water supply at Quandialla has been assured with the construction during the year of a second standby bore at a cost of \$127,384.

In summary, aside from ongoing operational and maintenance expenditure, major works were carried out in 2007/2008 at a cost of \$654,000.

The proposal to enlarge Lake Rowlands from 4,500 ML to 26,500 ML, by building a new dam wall 2.5kms downstream of the existing wall, has been set back pending the completion of the \$500,000 Centroc Water Security Feasibility Study in which Lake Rowlands is included. This study is due for completion in June 2009.

Council continues to be in a sound financial position. In their report on the 2007/2008 financial statements, Council's Auditors, Morse Group, stated that:

- The net surplus of unrestricted current assets is further evidence of Council's strong financial position.
- Council's Unrestricted Current Ratio of 2.55:1 indicates satisfactory liquidity.
- The Annual & User Charges Outstanding Percentage of 3.49% remains impressive in comparison to industry benchmarks.
- The Annual & User Charges Coverage Ratio indicates the proportion of total revenue that is generated by annual and

# General Manager's Report

user charges. The ability of the Council to meet community expectations in relation to water services is directly influenced by the discretion it can exercise in the allocation of its resources. A high level of coverage should mean that the Council would have more discretion over the allocation of funds, and also that a small increase in user charges will yield a greater increase in total revenue. Council's ratio of 79.9% (2007 – 73%) is consistent with prior years.

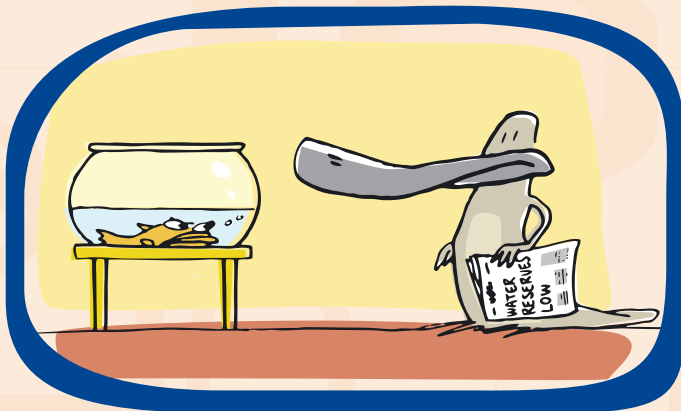
After providing for depreciation of \$1,549,000, Council's financial statements reveal a net operating deficit of \$416,000 for 2007/2008 and net assets have increased from \$49,087 million to \$52,674 million. Council's net deficit can be directly attributed to the revaluation of infrastructure assets

in 2006/2007 thereby increasing the depreciation expense by \$469,000.

The 2006/2007 NSW Performance Monitoring Report on Local Water Utilities, issued by the NSW Department of Water and Energy, reveals that Council continues to perform very highly in compliance when measured against the NSW Government Guidelines for Best Practice in Water and Sewerage Management.

I once again take this opportunity to thank all staff for their team performance, at a high level, and Council for the continued support that has been given throughout the year.

**A Perry**  
**General Manager**



We all need fresh water to live. We need large amounts to produce food, manufacture goods and sustain our health. We also need suitable supplies of water to drink. Water is a scarce and essential natural resource that must be used carefully.

# Council Profile

## Council Membership

Central Tablelands Water County Council is a constituency of three local government areas, namely, Blayney Shire, Cabonne Shire and Weddin Shire. The Council comprises two delegates each elected by their constituent council for a four-year term. The following Councillors were elected in March 2004, to represent their respective Councils until the next local government elections in September 2008.



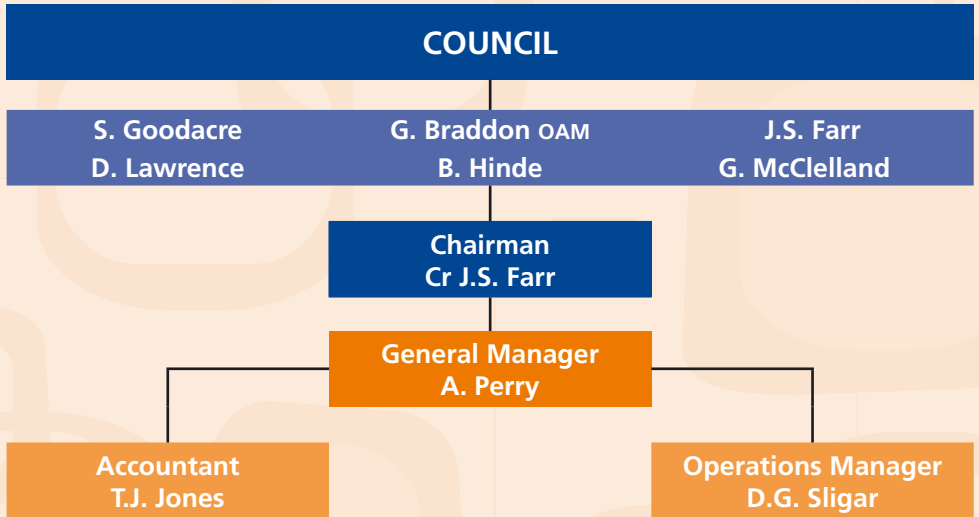
Back – LtoR: Trevor Jones (Accountant), Darrell Sligar (Operations Manager), Antony Perry (General Manager)  
Front – LtoR: Councillors – Sally Goodacre, Geoff Braddon OAM, John Farr (Chairman), Don Lawrence, Geoff McClelland (Deputy Chairman), Barry Hinde.

## General Information

### Council Meetings

Meetings of Council are held on the second Wednesday of alternate months, commencing in February each year. The meetings alternate between the towns of Grenfell, Blayney and Molong. Meetings are held in Molong in June and December, Grenfell in August and February, and Blayney in April and October.

# Organisational Structure



## Privacy & Personal Information Protection (PIIP) Act 1998

Council resolved on 9 August 2000 to comply with the Privacy Code of Practice for Local Government which was published in the Government Gazette on 30 June 2000 and took effect from 1 July 2000.

The Model Privacy Plan for Local Government, amended to suit Central Tablelands Water, was also adopted by Council on 9 August 2000.

## Mission & Vision

### Council's Mission is:

*Central Tablelands Water will develop a commercial focus as it operates in partnership with the communities it serves, fostering their development and growth, while maintaining both its level of service and its prices at an acceptable level.*

### Furthermore, its stated vision is:

*Central Tablelands Water sees its future as a Regional Water Authority, independent of other agencies. It sees itself as a responsible member of the communities it serves, aiding the development of the region. It will continue to develop further sources of water and continue to supply an economical and acceptable water supply to its customers, and it will do so in an ecologically sustainable manner. Central Tablelands Water will continue to evolve its method of operations to incorporate a sound commercial focus. It will do so without compromising on the services it provides, becoming more efficient and maintaining prices at a reasonable level.*

# Legislative Requirements

## Activities to Protect Environmentally Sensitive Areas - Section 428 (2) (c)

Council is not involved in the management of any environmentally sensitive areas. Council's water storages at Lake Rowlands and Bogolong Dam will continue to be operated according to best industry practice to ensure the long-term integrity of the storages, especially as regards controlling nutrient levels and blue-green algae populations. Council has carried out a willows eradication programme around the foreshores of Lake Rowlands and upstream of the Coombing Creek within Council owned land. The removal of the willows was followed up by a planting of nearly 10,000 native species. The maintenance and replacement of these plantings will be an ongoing programme until all are well established.

Council's filtration plants at Carcoar and Blayney are also operated according to industry best practice to ensure that all sludge is contained on-site and disposed of in an environmentally responsible manner. Supernatant water is recycled back through the filtration plants.

All construction sites will be maintained and restored in accordance with best practice guidelines for environmental control.

## Legal Proceedings

Section 428 (2) (e)

There were no legal proceedings taken by or against Council during 2007/2008.

## Chairman and Members Fees

Section 428 (2) (f)

The total allowance and fees paid to the Chairman and Councillors during 2007/2008 amounted to \$61,721.00.

Council's policy for the provision of facilities and the payment of councillors' expenses is as follows:

1. Council pay councillors an annual fee based on the maximum fee as determined by the Local Government Remuneration Tribunal;
2. In addition to the annual fee, Council reimburse actual expenses incurred to any councillor who:
  - attends a meeting of any committee of Council,
  - attends an inspection within the area in compliance with a resolution of the Council,
  - undertakes business of the Council outside of the area in compliance with a resolution of Council.
3. Council recompense councillors for travelling expenses at the rates per kilometre allowed at the time by the Australian Taxation Office, for all travelling associated with attendance at Council meetings or other business as specified above.
4. Council allow councillors any reasonable use of facilities to assist in their carrying out of business on behalf of the Council, such use being entirely at the discretion of the General Manager.
5. Council will provide the Chairman with the following facilities:
  - an office in the Council's Administrative Building;
  - access to telephone, facsimile and photocopy facilities for Council business purposes;
  - secretarial services for Council business as required;
  - identification badge bearing Council's crest;
  - payment of conference/seminar/workshop registration fees for attendance authorised by Council; and,
  - arrangement and payment of travel in respect of Council commitments.

# Legislative Requirements

6. Council will provide the Councillors with the following facilities:
  - access to telephone, facsimile and photocopy facilities for Council business purposes;
  - secretarial services for Council business as required;
  - identification badge bearing Council's crest;
  - payment of conference/seminar/workshop registration fees for attendance authorised by Council; and,
  - arrangement and payment of travel in respect of Council commitments.
7. Meals and refreshments will be provided to the Chairman and Councillors in conjunction with Council/Committee meetings and other functions/meetings as appropriate.
8. Expenses incurred whilst on approved travel outside the Council area will attract reimbursement according to the following guidelines:
  - Meals – where meals are not provided, the total bill for meals should not exceed \$60 per day.
  - Accommodation – where travel involves an overnight stay away from home the acceptable maximum expenditure on accommodation is:
    - ~ metropolitan areas \$200.00 per night
    - ~ country areas \$100.00 per night
    - ~ provided that all accommodation is approved prior to travelling, where practicable.

## Senior Staff - Section 428 (2) (g)

The General Manager is the only employee classified as senior staff. The total salary package for the General Manager in 2007/2008, including superannuation and motor vehicle, totalled \$116,614.00.

## Contracts Awarded During Year

Section 428 (2) (h)

Council did not enter into any contracts during 2007/2008.

## Bush Fire Hazard Reduction

Section 428 (2) (i1)

Bush fire hazard reduction activities are undertaken by constituent Councils and are not an activity or responsibility of Central Tablelands Water.

## Programs Promoting Services And Access To Services For People With Diverse Cultural And Linguistic Backgrounds

Section 428 (2) (j)

This activity is the responsibility of the constituent Councils and, being a single purpose water authority, does not involve Central Tablelands Water.

## Private Works Under Section 67(3) - Section 428 (2) (k)

Council did not carry out any work on private land during 2007/2008 that was fully or partly subsidised by Council.

## Contributions Under Section 356

Section 428 (2) (l)

The amounts contributed or otherwise granted under Section 356 during 2007/2008 totalled \$9,093.00.

## Human Resources Activities

Section 428 (2) (m)

Council has a commitment to ensuring that its entire staff are appropriately skilled and trained to carry out their responsibilities. Various in-house and external training programs will continue to be undertaken to ensure that the required skills are available.

# Legislative Requirements

The following training was undertaken by operations staff during 2007/2008:

Training Course	Number of Participants
Truck Licence	2
Dam Safety Surveillance Course	1
Water Maintenance & Service Certificate	4

In the absence of a Consultative Committee, management will continue to monitor Council's workplace environment and the implementation of Council's training and equal employment opportunity programs.

Management will:

- review the salary system to ensure progression through the salary structure is achieved upon the acquisition and use of skills and agreed performance criteria,
- benchmark existing remuneration levels of all positions within Council with remuneration levels of like positions across a broad range of other Councils,
- conduct annual performance reviews based on predetermined objectives and performance standards for all staff,
- review and maintain Council's training plan,
- develop a set of relevant competency standards for all positions,
- provide training on the basis of identified needs and priorities,
- continue to ensure that there is no compromise in regards to workplace safety and that all recommendations resulting from risk management assessments are carried out.

Staff positions continued to remain stable with no turnovers during 2007/2008.

## Equal Employment Opportunity - Section 428 (2) (n)

Council has adopted an Equal Employment Opportunity Management Plan, a copy of which has been distributed to all Council employees.

Council's philosophy for its Equal Employment Opportunity Management Plan is to create equality of opportunity, for all employees and potential employees, by ensuring that all recruitment, advancement and promotions are made on a merit basis.

## External Bodies Which Have Exercised Council-Delegated Functions - Section 428 (2) (o)

The Council has not delegated any functions to external bodies.

## Companies In Which Council Held A Controlling Interest

Section 428 (2) (p)

Council does not have any interest whatsoever in any company.

## Partnerships, Co-operatives And Other Joint Ventures To Which Council Was A Party

Section (428) (2) (q).

Council is not party to any partnerships, co-operatives or joint ventures.

## Asset Replacement and Upgrade Program

Council proposes to carry out the following asset replacements during the period July, 2008 to June, 2011. The order presented does not represent a priority order.

# Legislative Requirements

## 1. Mains replacement

- Reticulation Mains – In 2008/2009 – Replacement of AC water mains in Eugowra, at an estimated cost of \$239,899 and AC water mains in Cudal at an estimated cost of \$238,363.
- Reticulation Mains – In 2009/2010 – As determined at an estimated cost of \$492,610.
- Reticulation Mains – In 2010/2011 – As determined at an estimated cost of \$507,388.

## 2. Pump Replacements

- Provision is made for the replacement of pumps to the value of \$38,000 in 2008/2009, \$39,140 in 2009/2010 and \$40,310 in 2010/2011.

## 3. Other

- Annual replacement of water meters estimated at \$64,356 in 2008/2009,

\$66,286 in 2009/2010 and \$68,275 in 2010/2011.

- Motor vehicles and other plant in accordance with policy.

## Sales of Assets

Council does not propose to dispose of any of its existing major assets during the period covered by this Plan.

Motor vehicles and other plant items will be replaced according to Council's present replacement policy, which is outlined below. Minor assets will be disposed of as, and if, it is considered necessary.

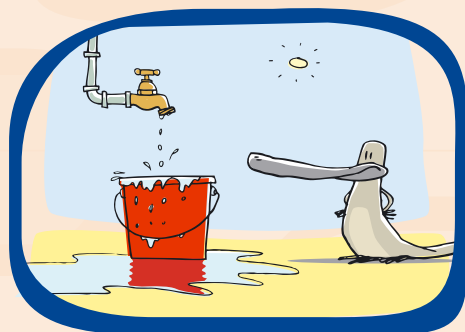
## Plant Replacement Policy

Council has adopted as its policy that all vehicle changeovers be made:

- at best market prices using either government auction or tender; and,
- be funded from the plant reserve.

Rurals	127,178
Blayney	269,972
Grenfell	289,374
Quandialla	41,720
Canowindra	222,736
Mandurama	12,920
Lyndhurst	16,843
Eugowra	66,767
Carcoar	19,442
Millthorpe	60,223
Cargo	18,791
Cudal	34,465
Manildra	57,147
Cowra Shire	196,736
<b>1,434,314</b>	
Newcrest	225,169
Friskies	44,863
WWL	25,561
MFM	62,899
<b>1,792,806</b>	
Unaccounted for Water	128,939 6.71%
<b>1,921,745</b>	

## Annual Water Consumption 2007 – 2008



Lake Rowlands	1,684,000
Gooloogong Bore	20,870
Blayney Well	216,875
<b>1,921,745</b>	

# Water Consumption

## Water Consumption Statistics

2002 / 2003	2003 / 2004	2004 / 2005	2005 / 2006	2006 / 2007	2007 / 2008	County Area
356	336	341	342	295	<b>270</b>	ML Blayney
29	25	23	25	22	<b>19</b>	ML Carcoar
16	14	14	14	13	<b>13</b>	ML Mandurama
106	99	86	88	70	<b>67</b>	ML Eugowra
71	66	65	68	63	<b>60</b>	ML Millthorpe
27	25	21	24	21	<b>17</b>	ML Lyndhurst
300	292	277	294	263	<b>223</b>	ML Canowindra
394	379	376	383	316	<b>289</b>	ML Grenfell
21	15	16	14	15	<b>42</b>	ML Quandialla
44	49	52	50	47	<b>34</b>	ML Cudal
28	24	24	24	22	<b>19</b>	ML Cargo
61	56	54	58	50	<b>57</b>	ML Manildra
246	182	166	172	183	<b>127</b>	ML Rurals
293	282	224	247	217	<b>197</b>	ML Bulk Sales
173	166	178	147	179	<b>359</b>	ML Industrials
<b>2,165</b>	<b>2,010</b>	<b>1,917</b>	<b>1,950</b>	<b>1,776</b>	<b>1,793</b>	<b>ML TOTAL WATER CONSUMPTION</b>
135	45	126	163	119	<b>64</b>	ML Est. Leakage
112	50	50	30	50	<b>50</b>	ML Flushing of mains
127	50	10	15	15	<b>15</b>	ML Unaccounted
<b>2,539</b>	<b>2,155</b>	<b>2,103</b>	<b>2,158</b>	<b>1,960</b>	<b>1,922</b>	<b>ML TOTAL WATER OUTPUT</b>
14.74%	6.73%	8.84%	9.64%	9.39%	<b>6.71%</b>	Water losses as % of total water output
	-7.16%	-11.46%	-9.93%	-17.97%	<b>-17.18%</b>	% Increase / decrease consumption on 2002/2003
	-7.16%	-4.63%	1.72%	-8.92%	<b>.96%</b>	% increase / decrease consumption on previous year

\* It should be noted that 'unaccounted' water includes leakage, illegal use and theft. ML = Megalitre = One Million Litres



Imagine 1000 one-litre milk cartons filled with water sitting on your doorstep each morning! Astonishingly, that's how much water is used at home each day by the average NSW family of four.

# Fees & Charges - 2008/2009

## The following fees and charges were resolved for the year 2008/2009:

	Residential/Rural		
	First 450 kilolitres per year	\$1.46	per kilolitre
	After 450 kilolitres per year	\$2.19	per kilolitre
<b>Water Charges</b>	Non-residential	\$1.46	per kilolitre
	Industrial		
	Nestle Purina		
	Manildra Flour Mills		
	Western White Linen	\$1.33	per kilolitre
	Standpipe sales	\$3.75	per kilolitre
<b>Water Charges - Quandialla</b>	first 200 kilolitres per quarter	\$1.20	per kilolitre
	after 200 kilolitres per quarter	\$2.00	per kilolitre
	Standpipe sales	\$5.50	per kilolitre
	20mm	\$124.00	per annum
	25mm	\$194.00	per annum
	32mm	\$317.00	per annum
<b>Availability Charges</b>	40mm	\$496.00	per annum
	50mm	\$775.00	per annum
	80mm	\$1,984.00	per annum
	100mm and over	\$3,100.00	per annum
	fire service ( <b>restricted to fire use only</b> )	\$124.00	per annum
	Unconnected built upon properties	\$62.00	per annum
<b>Availability Charges - Quandialla</b>	Connected or disconnected – 20mm	\$464.00	per annum
<b>Meter Test Fees</b>	20mm and 25mm	\$45.00	
<b>Reconnection Fees</b>	non-payment (less than 3 months)	\$115.00	
	non-payment (after 3 months)	\$250.00	
	other reconnection	\$250.00	
<b>Other Fees</b>	attend to disconnect	\$40.00	
	special reading fee	\$40.00	
	section 603 certificate (per property)	\$55.00	
<b>Administrative Fees</b>	Dishonoured cheque	\$25.00	
	photocopying (A4 - per copy)	\$0.50	per copy
	facsimile	\$2.50	per page
		\$1.00	per page
	Interest rate for overdue accounts	10% p.a.	
<b>Developer Charges</b>	per equivalent tenement (ET)	\$7,800.00	
<b>Capital Contribution Charges</b>	for developments on existing vacant unconnected land, <u>not subject to subdivision</u>		
	- Lake Rowlands supply area	\$3,370.00	
	- Quandialla \$464.00 for each year, or part thereof, after construction year 2001/2002		
	4 metres (footpath)	\$ 660.00	
	10 metres (dirt/gravel)	\$ 685.00	
<b>Service connection (20 mm only)</b>	10 metres (bitumen)	\$1,155.00	
	20 metres (dirt/gravel)	\$ 1010.00	
	20 metres (bitumen)	\$1,635.00	
	20 metres (bitumen & concrete footpath)	\$1,910.00	
	Rural connection	\$1,070.00	
<b>25mm connection</b>	P.O.A.		
<b>32mm &amp; above connection</b>	P.O.A.		

# Finance & Revenue

**The County Council model has proven to be a very effective institutional arrangement for the provision of water supply as the governance arrangement of the Council, comprising elected representatives from each of the constituent councils, maintains a close relationship between the community expectations and the policy decisions of the Council.**

Council considers that its pricing is cost effective due to the fact that, in 2010/2011, full cost recovery will have been achieved and able to be maintained. As well, the pricing has been set to self-fund an extensive capital works programme (\$55 million in 2008 \$ terms) over the next 30 years without the need for loan borrowings or government subsidies.

Council has a dedicated focus on consumer expectations and, through its pricing policy, consumers are receiving a water supply of high quality and reliability and this is wholly attributable to the pricing policy being able to fund an ongoing programme of infrastructure renewal and upgrade.

In 1994, Council was one of the first non-metropolitan local water utilities to implement full user pay pricing for water. Prior to user pay pricing, water revenue was raised through

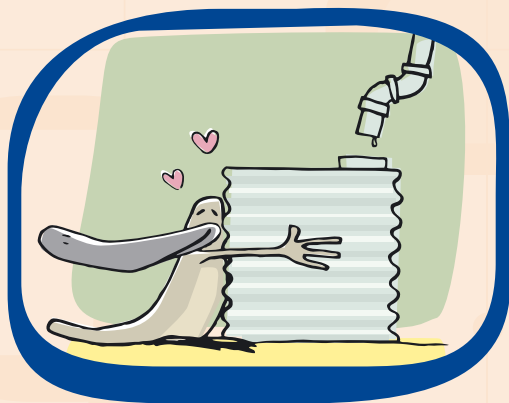
rating which is a charge based on land valuation and invariably it also provided an annual water allowance, usually around 372 kilolitres, before an excess charge was applied. Charging for water based on a measured consumption is the most fair and equitable means of raising revenue.

Council has embraced Best Practice Pricing of Local Water Utility services as outlined in the Best Practice Management of Water Supply and Sewerage Guidelines. In summary, the following pricing regime exists for Central Tablelands Water:

1. A two part pricing policy of an availability (access) charge, determined on the diameter of the meter, and a consumption charge,
2. Residential and rural consumers are subject to a 50% increase in the usage charge for consumption in excess of 450 kL per annum,
3. Non-residential cross subsidies are being phased out over five (5) years (phased out in 2010/2011),
4. Water accounts are rendered quarterly.

## Availability (Access) Charges

The availability charge is calculated by multiplying the charge for a standard 20mm connection by the flow capacity factor (FCF) listed in the *Flow Capacity Table* over the page.



Rainwater tanks can provide a renewable supply of water. Installing a rainwater tank in your home can reduce demand on our precious water supplies, reduce your water bills and reduce the impact of stormwater.

## FLOW CAPACITY TABLE

Diameter of Water Services	20mm	25mm	32mm	40mm	50mm	80mm	100mm
Flow Capacity Factor	1.00	1.5625	2.56	4.00	6.25	16.00	25.00

### Developer Charges

During 2004/2005 Council completed its Developer Servicing Plan in accordance with the Section 64 Developer Charges Guidelines issued by the Department of Energy, Utilities and Sustainability (DEUS).

Incorporated in the Developer Servicing Plan is the calculated developer charge per Equivalent Tenement (ET) levied on all new developments, or additions/changes to existing developments, supplied from the Lake Rowlands Supply area.

The Section 64 Developer Charge for 2008/2009 is \$7,800.00 per ET.

Council resolved that the determination of an ET would be in accordance with the Section 64 Determination of Equivalent Tenement Guidelines, published by the NSW Water Directorate and that the charge would be indexed on 1 July each year in accordance with the change in the Consumer Price Index

for Sydney in the preceding 12 months to December.

Council has also adopted a capital contribution charge for developments on existing vacant unconnected land, not subject to subdivision (in-fill blocks), within all towns and villages, with the exception of Quandialla. This charge would also be indexed on 1 July each year in accordance with the change in the Consumer Price Index for Sydney in the preceding 12 months to December.

The capital contribution charge on existing vacant unconnected land for 2008/2009 is \$3,370.00.

The capital contribution charge for all vacant unbuilt upon land within the existing village of Quandialla remains in accordance with the adopted fees and charges for 2008/2009.

The laundry is a large consumer of water in the home. Automatic washing machines reduce the time required to do the washing, but can use excessive amounts of water.



## Central Tablelands Water

### General Purpose Financial Report for the financial year ended 30 June 2008

Statement by Councillors and Management  
made pursuant to Section 413(2)(c) of the Local Government Act 1993 (as amended)

The attached General Purpose Financial Report has been prepared in accordance with:

- The Local Government Act 1993 (as amended) and the Regulations made thereunder,
- The Australian Accounting Standards and professional pronouncements, and
- The Local Government Code of Accounting Practice and Financial Reporting.

To the best of our knowledge and belief, this Report:

- presents fairly the Council's operating result and financial position for the year, and
- accords with Council's accounting and other records.

We are not aware of any matter that would render this Report false or misleading in any way.

Signed in accordance with a resolution of Council made on 20th August 2008.



J. S. Farr  
CHAIRMAN



G. McClelland  
DEPUTY CHAIRMAN



A. Perry  
GENERAL MANAGER



T. J. Jones  
RESPONSIBLE ACCOUNTING OFFICER

# Income Statement

## Income Statement for the financial year ended 30th June 2008

Budget 2008 \$'000		Actual 2008 \$'000	Actual 2007 \$'000
	<b>INCOME FROM CONTINUING OPERATIONS</b>		
	<b>REVENUE:</b>		
695	Rates & Annual Charges	698	687
2,556	User Charges & Fees	2,315	2,219
156	Interest & Investment Revenue	167	154
15	Other Revenues	18	36
92	Grants & Contributions provided for Operating Purposes	100	160
159	Grants & Contributions provided for Capital Purposes	362	522
	<b>OTHER INCOME:</b>		
38	Net gains from Disposal of Assets	-	-
-	Share of interests in Joint Ventures & Associated Entities using the Equity Method	-	-
3,711	<b>Total Income from Continuing Operations</b>	3,660	3,778
	<b>EXPENSES FROM CONTINUING OPERATIONS</b>		
1,190	Employee Benefits & On-costs	1,142	1,127
354	Borrowing Costs	354	368
613	Materials & Contracts	557	584
1,038	Depreciation & Amortisation	1,549	1,080
-	Impairment	-	-
461	Other Expenses	367	445
-	Interest & Investment Losses	-	-
-	Net Losses from the Disposal of Assets	107	8
-	Share of interests in Joint Ventures & Associates using the Equity Method	-	-
3,656	<b>Total Expenses from Continuing Operations</b>	4,076	3,612
55	<b>OPERATING RESULT FROM CONTINUING OPERATIONS</b>	(416)	166
	<b>DISCONTINUED OPERATIONS</b>		
	Net Profit / (Loss) from Discontinued Operations	-	-
55	<b>NET OPERATING RESULT FOR THE YEAR</b>	(416)	166
55	<b>Net Operating Result Attributable to Council</b>	(416)	166
-	<b>Net Operating Result Attributable to Minority Interests</b>	-	-
(104)	<b>NET OPERATING RESULT FOR THE YEAR BEFORE GRANTS &amp; CONTRIBUTIONS PROVIDED FOR CAPITAL PURPOSES</b>	(778)	(356)

# Balance Sheet

<b>Balance Sheet as at 30th June 2008</b>	<b>Actual 2008 \$'000</b>	<b>Actual 2007 \$'000</b>
<b>ASSETS</b>		
<b>CURRENT ASSETS</b>		
Cash & Cash Equivalents	838	668
Investments	-	-
Receivables	281	213
Inventories	385	385
Other	54	36
Non-current assets classified as 'held for sale'	-	-
<b>TOTAL CURRENT ASSETS</b>	<b>1,558</b>	<b>1,302</b>
<b>NON-CURRENT ASSETS</b>		
Investments	1,031	1,620
Receivables	-	-
Inventories	-	-
Infrastructure, Property, Plant & Equipment	55,982	52,392
Investments Accounted for using the equity method	-	-
Investment Property	-	-
Intangible Assets	-	-
Non-current assets classified as 'held for sale'	-	-
Other	-	-
<b>TOTAL NON-CURRENT ASSETS</b>	<b>57,013</b>	<b>54,012</b>
<b>TOTAL ASSETS</b>	<b>58,571</b>	<b>55,314</b>
<b>LIABILITIES</b>		
<b>CURRENT LIABILITIES</b>		
Payables	154	288
Borrowings	242	226
Provisions	515	481
<b>TOTAL CURRENT LIABILITIES</b>	<b>911</b>	<b>995</b>
<b>NON-CURRENT LIABILITIES</b>		
Payables	-	-
Interest Bearing Liabilities	4,977	5,220
Provisions	9	12
<b>TOTAL NON CURRENT LIABILITIES</b>	<b>4,986</b>	<b>5,232</b>
<b>TOTAL LIABILITIES</b>	<b>5,897</b>	<b>6,227</b>
<b>NET ASSETS</b>	<b>52,674</b>	<b>49,087</b>
<b>EQUITY</b>		
Retained Earnings	34,086	34,421
Revaluation Reserves	18,588	14,666
Council Equity Interest	52,674	49,087
<b>TOTAL EQUITY</b>	<b>52,674</b>	<b>49,087</b>

# Changes in Equity

## Statement of Changes in Equity

for the financial year ended 30 June 2008

\$'000	Retained Earnings	Reserves	Council Equity Interest	Minority Interest	Total Equity
<b>2008</b>					
<b>Opening Balance</b> (as per last years Audited Accounts)	34,421	14,666	<b>49,087</b>	-	<b>49,087</b>
- Correction of Prior Period Errors	81	-	81	-	81
- Changes in Accounting Policies (prior year effects)	-	-	-	-	-
<b>Revised Opening Balance</b> (as at 1/7/07)	<b>34,502</b>	14,666	49,168	-	49,168
Current Year Income & Expenses Recognised direct to Equity					
- Transfers to / (from) Asset Revaluation Reserve	-	4,511	4,511	-	4,511
- Transfers to / (from) Other Reserves	-	(592)	(592)	-	(592)
- Other Income / Expenses recognised	-	-	-	-	-
- Other Adjustments	-	3	3	-	3
<b>NET INCOME RECOGNISED DIRECTLY IN EQUITY</b>	-	3,922	3,922	-	3,922
<b>Net Operating Result for the Year</b>	(416)		(416)	-	(416)
<b>TOTAL RECOGNISED INCOME &amp; EXPENSES</b>	(416)	3,922	3,506	-	3,506
Distributions to / (Contributions from) Minority Interests	-	-	-	-	-
Transfers between Equity	-	-	-	-	-
<b>EQUITY - END OF REPORTING PERIOD BALANCE</b>	<b>34,086</b>	18,588	52,674	-	52,674
<b>2007</b>					
<b>Opening Balance</b> (as per last years Audited Accounts)	28,765	(42)	<b>28,723</b>	-	<b>28,723</b>
- Correction of Prior Period Errors	5,490	-	5,490	-	5,490
- Changes in Accounting Policies (prior year effects)	-	-	-	-	-
<b>Revised Opening Balance</b> (as at 1/7/06)	<b>34,255</b>	(42)	<b>34,213</b>	-	<b>34,213</b>
Current Year Income & Expenses Recognised direct to Equity					
- Transfers to / (from) Asset Revaluation Reserve	-	14,663	<b>14,663</b>	-	<b>14,663</b>
- Transfers to / (from) Other Reserves	-	43	43	-	43
- Other Income / Expenses recognised	-	2	2	-	2
- Other Adjustments	-	-	-	-	-
<b>NET INCOME RECOGNISED DIRECTLY IN EQUITY</b>	-	14,708	14,708	-	14,708
<b>Net Operating Result for the Year</b>	166		166	-	166
<b>TOTAL RECOGNISED INCOME &amp; EXPENSES</b>	166	14,708	14,874	-	14,874
Distributions to / (Contributions from) Minority Interests	-	-	-	-	-
Transfers between Equity	-	-	-	-	-
<b>EQUITY - END OF REPORTING PERIOD BALANCE</b>	<b>34,421</b>	14,666	49,087	-	49,087

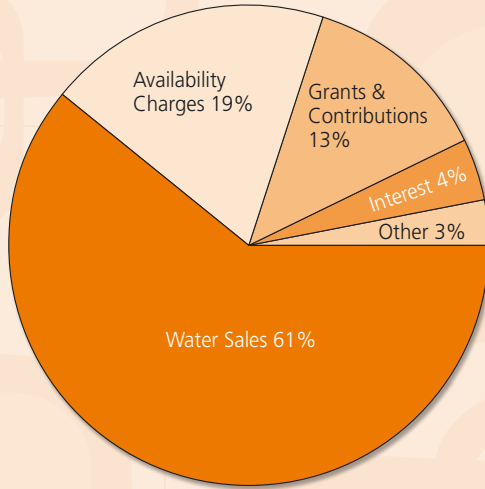
# Statement of Cash Flows

## Cash Flow Statement for the financial year ended 30 June 2008

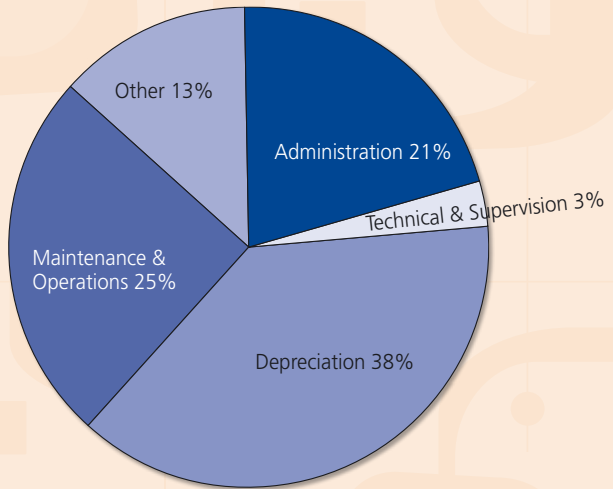
<b>Budget</b>	<b>Actual</b>	<b>Actual</b>
<b>2008</b>	<b>2008</b>	<b>2007</b>
<b>\$'000</b>	<b>\$'000</b>	<b>\$'000</b>
<b>CASH FLOWS FROM OPERATING ACTIVITIES</b>		
<b>Receipts</b>		
695 Rates & Annual Charges	<b>698</b>	687
2,637 User Charges & Fees	<b>2,283</b>	2,202
158 Interest & Investment Revenue Received	<b>169</b>	153
112 Grants & Contributions	<b>407</b>	768
234 Other	<b>161</b>	375
<b>Payments</b>		
(1,100) Employee Benefits & On-costs	<b>(1,113)</b>	(1,068)
(1,136) Materials & Contracts	<b>(746)</b>	(553)
(354) Borrowing Costs	<b>(354)</b>	(368)
(507) Other	<b>(501)</b>	(634)
<b>739 Net Cash provided (or used in) Operating Activities</b>	<b>1,004</b>	1,562
<b>CASH FLOWS FROM INVESTING ACTIVITIES</b>		
<b>Receipts</b>		
- Sale of Investment Securities	-	280
426 Sale of Infrastructure, Property, Plant & Equipment	<b>1,021</b>	465
<b>Payments</b>		
(131) Purchase of Investment Securities	<b>(3)</b>	(797)
(638) Purchase of Infrastructure, Property, Plant & Equipment	<b>(1,625)</b>	(1,593)
<b>(343) Net Cash provided (or used in) Investing Activities</b>	<b>(607)</b>	(1,645)
<b>CASH FLOWS FROM FINANCING ACTIVITIES</b>		
<b>Receipts</b>		
- Nil		
<b>Payments</b>		
(226) Repayments of Borrowings & Advances	<b>(227)</b>	(213)
<b>(226) Net Cash Flow provided (used in) Financing Activities</b>	<b>(227)</b>	(213)
<b>170 Net Increase / (Decrease) in Cash &amp; Cash Equivalents</b>	<b>170</b>	(296)
600 plus: Cash & Cash Equivalents - beginning of year	<b>668</b>	964
<b>770 Cash &amp; Cash Equivalents - end of the year</b>	<b>838</b>	668

# 2007/2008 Operating Statement

## Operating Revenue



## Operating Expenses



# Special Schedule No.3

## Water Supply Income Statement

Includes ALL INTERNAL TRANSACTIONS, ie. prepared on a Gross Basis.  
for the financial year ended 30 June 2008

<b>A. EXPENSES &amp; INCOME</b>		<b>2008</b>	<b>2007</b>
<b>EXPENSES</b>		<b>\$'000</b>	<b>\$'000</b>
<b>Management Expenses</b>	- Administration	861	831
	- Engineering & Supervision	113	113
<b>Operation &amp; Maintenance</b>			
	- Dams & Weirs		
	- Operation Expenses	-	-
	- Maintenance Expenses	141	173
	- Mains		
	- Operation Expenses	-	-
	- Maintenance Expenses	294	256
	- Reservoirs		
	- Operation Expenses	-	-
	- Maintenance Expenses	27	22
	- Pumping Stations		
	- Operation Expenses (excluding energy costs)	-	-
	- Energy Costs	95	182
	- Maintenance Expenses	34	69
	- Treatment		
	- Operation Expenses (excluding energy costs)	120	114
	- Chemical Costs	123	111
	- Maintenance Expenses	129	125
	- Other		
	- Operation Expenses	23	25
	- Maintenance Expenses	47	40
	- Purchase of Water	-	-
<b>Depreciation</b>			
	- System Assets	1,404	943
	- Plant & Equipment	146	137
<b>Miscellaneous Expenses</b>			
	- Interest Expenses	354	368
	- Revaluation Decrements	-	-
	- Other Expenses	165	95
	- Tax Equivalents Dividends (actually paid)	-	-
<b>Total Expenses</b>		<b>4,076</b>	<b>3,604</b>
<b>INCOME</b>			
<b>Residential Charges</b>			
	- Access	444	439
	- User Charges	1,013	1,005
<b>Non-Residential Charges</b>			
	- Access	254	248
	- User Charges	1,213	1,072
<b>Extra Charges</b>		7	6
<b>Interest Income</b>		160	148
<b>Other Income</b>		107	179
<b>Grants</b>			
	- Grants for Acquisition of Assets	60	46
	- Grants for Pensioner Rebates	57	56
	- Other Grants	9	6
<b>Contributions</b>			
	- Developer Charges	294	364
	- Developer Provided Assets	8	157
	- Other Contributions	34	52
<b>Total Income</b>		<b>3,660</b>	<b>3,778</b>
Gain or Loss on Disposal of Assets			(8)
<b>OPERATING RESULT</b>		<b>(416)</b>	<b>166</b>
Operating Result (less Grants for Acquisition of Assets)		<b>(476)</b>	<b>120</b>

# Special Schedule No.3

## Water Supply Income Statement (continued)

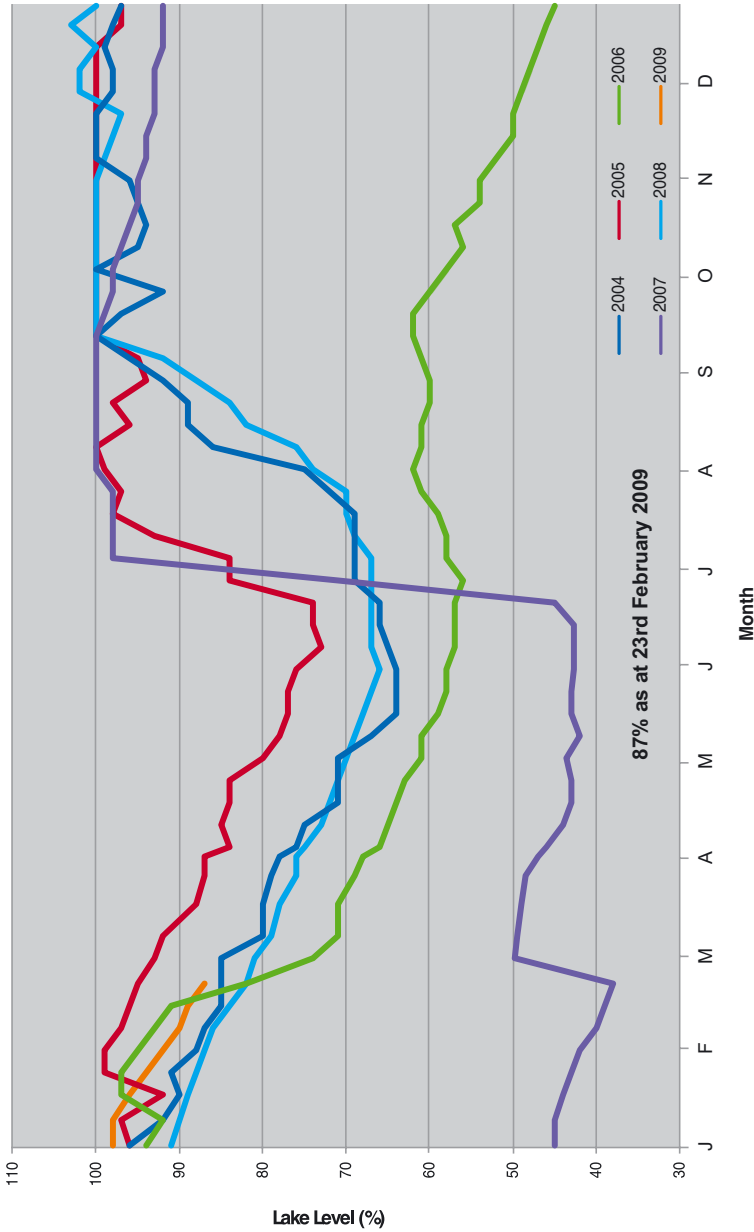
Includes ALL INTERNAL TRANSACTIONS, ie. prepared on a Gross Basis.  
for the financial year ended 30 June 2008

B. CAPITAL TRANSACTIONS	2008	2007
	\$'000	\$'000
<b>Non - Operating Expenditures</b>		
<b>Acquisition of Fixed Assets</b>		
- Subsidised Scheme	-	-
- Other New System Assets	1	5
- Renewals	606	766
- Plant & Equipment	493	795
<b>Repayment of Debt</b>		
- Loans	227	213
- Advances	-	-
- Finance Leases	-	-
<b>Transfer to Sinking Fund</b>	-	-
<b>Totals</b>	<b>1,327</b>	<b>1,779</b>
<b>Non-Operating Funds Employed</b>		
<b>Proceeds from Disposal of Assets</b>	480	745
<b>Borrowing Utilised</b>		
- Loans	-	-
- Advances	-	-
- Finance Leases	-	-
<b>Transfer from Sinking Fund</b>	-	-
<b>Totals</b>	<b>480</b>	<b>745</b>
<b>C. RATES &amp; CHARGES</b>		
<b>Number of Assessments</b>		
- Residential (occupied)	4,078	4,054
- Residential (unoccupied)	26	35
- Non-Residential (occupied)	1,317	1,312
- Non-Residential (unoccupied)	9	11
<b>Number of ETs for which Developer Charges were received</b>	48 ET	80 ET
<b>Total Amount (actual dollars) of Pensioner Rebates</b>	<b>\$102,487</b>	<b>\$102,636</b>
<b>D. BEST PRACTICE ANNUAL CHARGES &amp; DEVELOPER CHARGES*</b>		
<b>Annual Charges</b>		
Does Council have best-practice water supply annual charges and usage charges*?	<input type="checkbox"/> yes	
Cross-subsidy <b>from</b> residential customers using less than allowance (page 25 of guidelines)		-
Cross-subsidy <b>to</b> non-residential customers (page 24 of guidelines)		-
Cross-subsidy <b>to</b> large connections in unmetered supplies (page 26 of guidelines)		-
<b>Developer Charges</b>		
Has Council completed a water supply Development Servicing** Plan?	<input type="checkbox"/> yes	
Total cross-subsidy in water supply developer charges for 2007/2008 (page 47 of guidelines)		-

# Lake Rowlands

## Lake Rowlands Storage Levels 2004 – 2009

Lake Rowlands Storage Levels 2004-2009



# Water Analysis Results

AHS - Greater Western PHU  
Water Supply Authority - Central Tablelands Water (CT)

Date Range - From - 01 July 2007 To - 30 June 2008

Sample Type/s - All

Laboratory/s - ICPMR-DAL Laboratory

Barcode Count - These results represent 264 distinct samples.

Institute of Clinical Pathology and Medical  
Research-Division of Analytical Laboratories.  
NATA Accredited Laboratory Number: 3189

## Summary Display

Parameter	Guideline Value	Mean	Median	Standard deviation	Min.	Max.	No. of samples	No. of exceptions	95th percentile	5th percentile	% meeting guideline values
Total Coliforms	0.0000 cfu/100 mL	0.888	0	12.988	0	202	242	6	22.189	10.1	98
E. coli	0.0000 cfu/100 mL	0	0	0	0	0	242	0	0	0	100
pH	6.5 - 8.5	7.589	7.65	0.312	7.1	8.1	18	0	8.101	7.15	100
Turbidity	5.0000 NTU	0.306	0.25	0.184	0.1	0.8	16	0	0.609	0.135	100
Free Chlorine	5.0000 mg/L	0.432	0.5	0.146	0	0.8	212	0	0.670	0.04	100
Total Chlorine	5.0000 mg/L	0.51	0.51	-	0.51	0.51	1	0	-	0.51	100
Total Dissolved Solids (TDS)	500.0000 mg/L	148.688	87.5	168.228	78	581	16	2	424.581	103.15	88
Aluminium	0.2000 mg/L	0.118	0.08	0.128	0.010	0.45	16	3	0.328	0.032	81
Antimony	0.0030 mg/L	0.001	0.001	0	0.001	0.01	16	0	0.001	0.001	100
Arsenic	0.0070 mg/L	0.001	0.001	0.000	0.001	0.002	16	0	0.002	0.001	100
Barium	0.7000 mg/L	0.027	0.017	0.031	0	0.099	16	0	0.078	0.005	100
Boron	4.0000 mg/L	0.099	0.099	0	0.099	0.099	16	0	0.099	0.099	100
Cadmium	0.0020 mg/L	0.001	0.001	0.000	0.001	0.001	16	0	0.001	0.001	100
Calcium	9999.0000 mg/L	13.467	9.995	8.754	8.29	35.88	16	0	27.823	9.670	100
Chloride	250.0000 mg/L	37.456	16.6	58.157	14	188.5	16	0	132.833	22.725	100
Chromium	0.0500 mg/L	0.008	0.005	0.005	0.005	0.021	16	0	0.017	0.006	100
Copper	2.0000 mg/L	0.023	0.009	0.034	0	0.099	16	0	0.078	0.005	100
Fluoride	1.5000 mg/L	0.89	0.885	0.094	0.73	1.05	22	0	1.044	0.746	100
Iodide	0.1000 mg/L	0.020	0.020	0	0.020	0.020	2	0	0.020	0.020	100
Iodine	0.1000 mg/L	0.056	0.022	0.094	0.020	0.308	16	2	0.21	0.034	88
Iron	0.3000 mg/L	0.058	0.055	0.043	0.010	0.17	16	0	0.129	0.018	100
Lead	0.0100 mg/L	0.003	0.002	0.002	0	0.010	16	0	0.006	0.001	100
Magnesium	9999.0000 mg/L	9.378	6.635	7.916	5.46	29.75	16	0	22.361	6.675	100
Manganese	0.5000 mg/L	0.006	0.005	0.005	0	0.017	16	0	0.014	0.001	100
Mercury	0.0010 mg/L	0.000	0.000	0	0.000	0.000	16	0	0.000	0.000	100
Molybdenum	0.0500 mg/L	0.007	0.005	0.002	0.005	0.010	16	0	0.010	0.005	100
Nickel	0.0200 mg/L	0.010	0.010	0	0.010	0.010	16	0	0.010	0.010	100
Nitrate	50.0000 mg/L	1.4	0.99	0.675	0.99	2.8	16	0	2.507	1.081	100
Nitrite	3.0000 mg/L	0.112	0.099	0.035	0.099	0.2	16	0	0.168	0.104	100
Selenium	0.0100 mg/L	0.003	0.002	0.003	0	0.010	16	0	0.007	0.001	100
Silver	0.1000 mg/L	0.003	0.002	0.003	0	0.010	16	0	0.008	0.001	100
Sodium	180.0000 mg/L	28.681	10.75	49.806	8.3	156.6	16	0	110.364	15.715	100
Sulfate	500.0000 mg/L	9.981	4.1	17.932	2	56.1	16	0	39.390	4.705	100
Total Hardness as CaCO <sub>3</sub>	200.0000 mg/L	72.288	53	54.235	43.2	212.1	16	2	161.232	51.645	88
True Colour	15.0000 Hazen Units (HU)	2.055	2	0.637	0.99	3	16	0	3.099	1.091	100
Zinc	3.0000 mg/L	0.035	0.025	0.028	0.010	0.099	16	0	0.081	0.014	100
Fluoride (field result WSA)	1.5000 mg/L	0.932	0.94	0.085	0.63	1.04	20	0	1.071	0.651	100
Fluoride Ratio	0.8 - 1.2	1.033	1.06	0.095	0.78	1.17	20	1	1.188	0.800	95

# Your Account Explained...

## PAYMENT OF ACCOUNTS.

Central Tablelands Water issues quarterly water accounts. Accounts are issued in August, November, February and May.

To assist consumers, Central Tablelands Water has the following range of payment options, including electronic and credit card facilities through the Macquarie Bank DEFT system:

### In Person

Present the account intact and make your payment by cash or cheque at any Post Office.

Payments can also be made at Council's Blayney office, the office of Weddin Shire Council and the Cargo General Store.

### BPAY

If your bank offers BPAY, you can use DEFT to pay your water account by phone, internet or directly from your bank account.

### Credit or Charge Card

Payments can be made over the phone using your credit card or charge card. All you have to do is call **1300 301 090** when your water account is due. Credit Card facilities are also available when paying in person at Council's Blayney office.

### From Your Bank Account

Transfer funds from your pre-registered bank, building society or credit union account.

To use this option you must complete an application form which is available by contacting **1800 672 162**.

### Telephone

Payments can be programmed in advance from your bank account or credit card by calling **1300 301 090** and follow the recorded instructions.

### Mail

Detach your payment slip and return it together with your cheque to:

Central Tablelands Water  
PO Box 61  
BLAYNEY NSW 2799

## Centrelink

Use Centrepay to arrange regular deductions from your Centrelink payment. Call Centrelink to request Centrepay deductions.

**Centrepay Reference: 555 052 389K**

## PENSIONERS

Pensioners are entitled to a rebate of up to \$87.50 each year on their water account. (This will appear as a deduction of \$21.87 on each account.) To be eligible you must be the owner and reside on the property.

To apply for a rebate, you must complete an application form, available from Council's administration office, or online from Council's website, [www.ctw.nsw.gov.au](http://www.ctw.nsw.gov.au), and provide a copy of your pensioner concession card.

## CENTREPAY

Central Tablelands Water now offers CENTREPAY, which enables Centrelink customers to budget and plan their finances more effectively. A Centrepay application form is available from Council's administration office, or online from Council's website, [www.ctw.nsw.gov.au](http://www.ctw.nsw.gov.au)

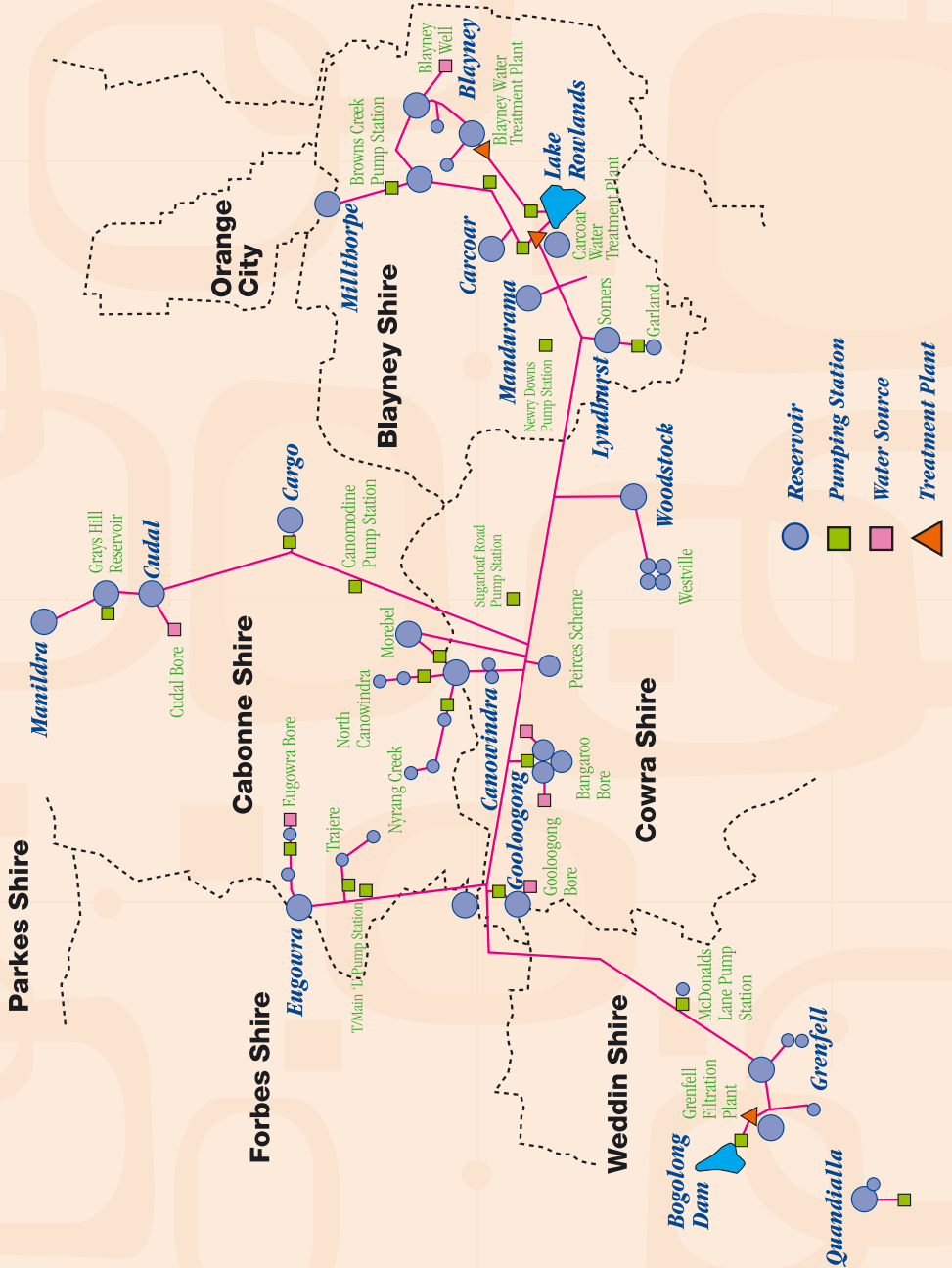
## TENANTS AND LANDLORDS

The person, or persons, who are listed as the owner of the property will receive all water accounts and are responsible for their payment.

A number of landlords have lease agreements that stipulate that the tenant is responsible for the usage or consumption charge.

**The billing of tenants is the owner's or agent's responsibility. Central Tablelands Water will not be involved in any arrangement to collect money from tenants.**

# System Layout



# Be WaterWise

We need to be WaterWise to protect our standard of living and that of future generations. If we do not change our habits now, our way of life will dramatically change. Being WaterWise is easy.

